



FOSC™400 A4 Fiber Optic Splice Closure, Heat Shrink Cable sealing, no pre-installed trays

- Single-ended, O-ring sealed dome closure for splicing feeder and distribution cables
- Compatible with most common cable types: e.g. loose tube, central core, ribbon fiber
- FOSC splice trays hinged for access to any splice without disturbing other trays
- Closure can be used in aerial, pedestal and underground (up to 5 meters) environments
- Compatible with CommScope's CWDM modules and optical splitter trays

Product Classification

Product Type	Single-ended, round fiber closure
Regional Availability	Asia EMEA
Product Series	FOSC 400

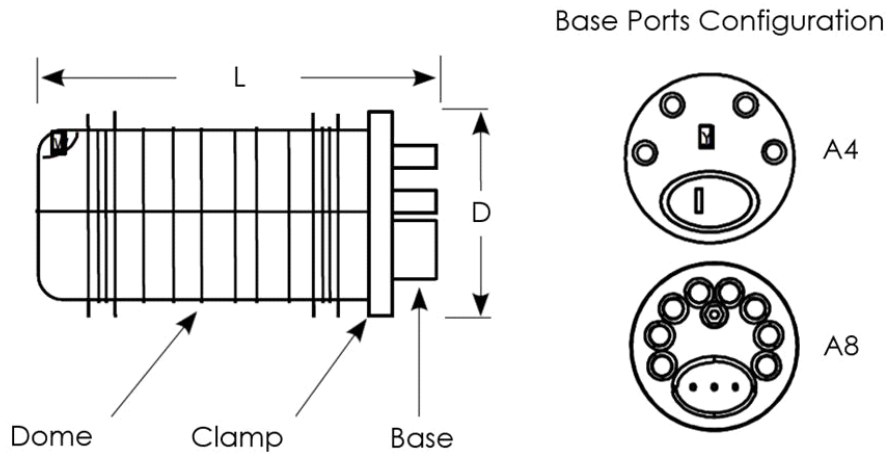
General Specifications

Splicing Type, Supported	Single fusion
Splicing Capacity, Single Fusion, maximum	48
Color	Black
Network Area Type	Feeder
Package, quantity	1
Packaging Type	Box Carton
Splice Tray Included, quantity	0
Splicing Capacity, Single Splice, 12 fibers, maximum	48
Splicing Capacity, Single Splice, 6 fibers, maximum	24

Dimensions

Main Cable Diameter, maximum	25.00 mm
Diameter	150.00 mm 5.91 in
Diameter, with clamp	180 mm 7 in
Length	420.00 mm 16.54 in
Weight	1.90 kg 4.19 lb

Dimension Drawing



Mechanical Specifications

Cable Sealing Type	Heat shrink
Cable Entry Drop Port Style	Round
Cable Entry Main Port Style	Oval
Cable Ports, quantity	5
Closure Sealing Type	Dome-to-base clamp with O-ring
Closure Style	Single-ended
Material Type	Impact-resistant polymer
Mount Type	Pole Strand Wall

Environmental Specifications

Environmental Space	Below ground Buried
Qualification Standard	IEC 61300, 6 m waterhead

Regulatory Compliance/Certifications

Agency	RoHS 2011/65/EU	Classification	Compliant
---------------	-----------------	-----------------------	-----------